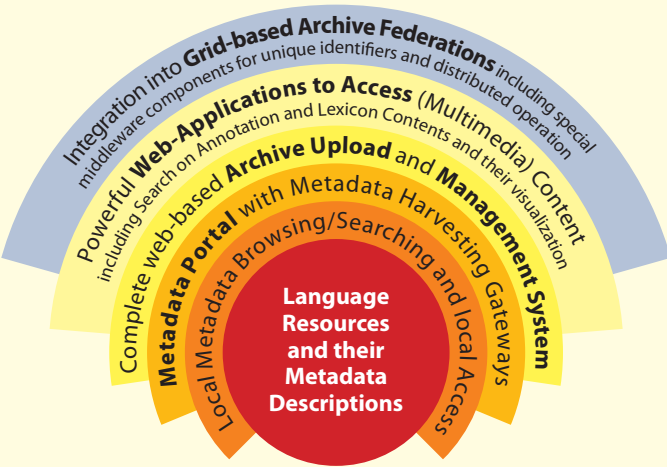




LAT

From Notebook to Archive Systems

The LAT archiving software can be installed for different functionality levels - ranging from very simple, having just a few files and a web-server, to very complex, including implementing unique resource identifiers by making use of the global Handle Service and taking part in a Shibboleth identity or even archive federation.



Each functionality layer is included in the next one - therefore one can start managing a simple archive on a notebook and finish with a full-blown Grid enabling server system. A typical server enabling layer three/four, such as installed in Kiel, has the following specifications: 2 CPU 3 GHz, 4 GB memory, 1 TB Disk, LTO3 Tape Unit. Such a system currently costs about 6.000 € and can be extended.



LAT

Goals

This flyer is about an initiative to help establishing regional/local language archives and integrating them into an archive federation. From the very beginning of the DOBES¹ (Documentation of Endangered Languages) programme it was the intention to help in setting up regional/local language archives to meet three major goals:

- "return" the rich language resources to the regions where they are recorded or to the responsible collectors
- motivate regional people to continue the work after the DOBES programme has been finished
- distribute the digital data at world level to take care of long-term persistence.

Interested?

If you are interested in setting up a regional/local archive based on LAT technology and integrate it later into the emerging language archives federations, then, please, contact the LAT team.

Acknowledgements

This initiative is based on funds from the Volkswagen-Foundation, the European Commission (DAM-LR), the Max-Planck-Society and the Max-Planck-Institute for Psycholinguistics.



Max Planck Institute for Psycholinguistics

P.O. Box 310
6500 AH Nijmegen
The Netherlands
Wundtlaan 1
NL 6525 XD Nijmegen

Phone: (+31) (0)24 - 3521911
Fax: (+31) (0)24 - 3521213
eMail: software@mpi.nl

www.mpi.nl/lat



LAT

Language Archiving Technology

Towards a federation of archives

"Op een Been steit nich good"

Regional Language Archives

Max Planck Institute for Psycholinguistics

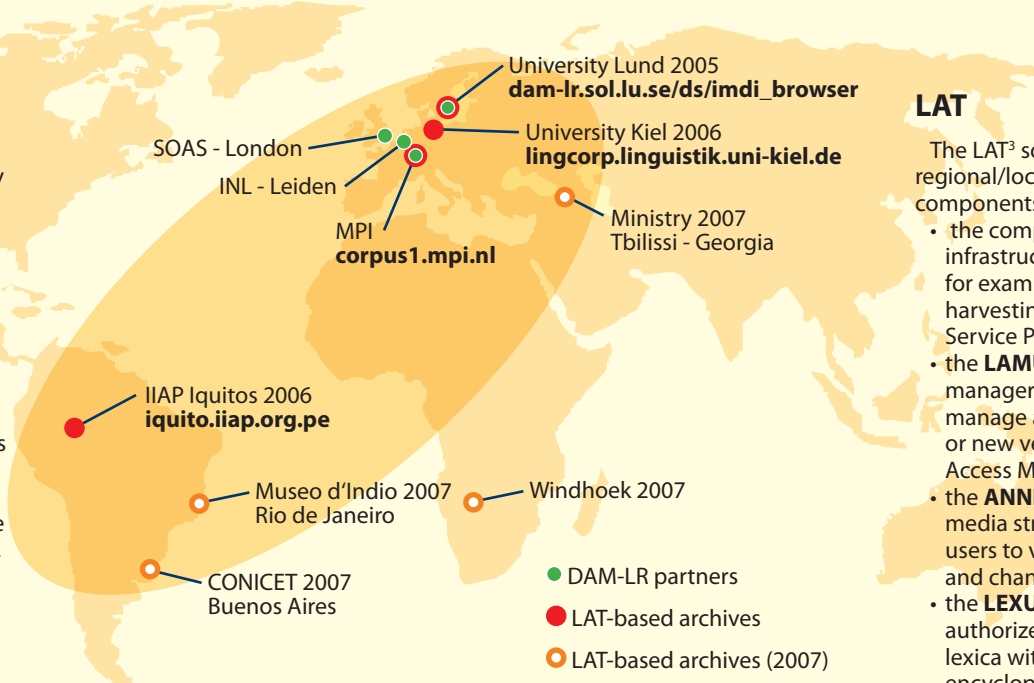


Regional Archives at Work

During the last two years the MPI has extended its Language Archiving Technology (LAT) in such a way that regional archives can now be established in a fast and efficient manner. The LAT technology has now been installed at three remote locations in collaboration with local experts, together with a copy of the corresponding language resources. The content has partly been extended by these local experts by using the full functionality. All archives are offering their services via the web. Four other archives are scheduled for 2007, and negotiations with a few other centers world-wide are in progress. The local experts will manage these servers, and have complete control of access, archive extension, etc.

Procedure

A collaboration agreement between the MPI and the interested party will be agreed upon. Either the partner, or in special cases the MPI, will purchase a server that is powerful enough for the operation. Currently, the MPI will setup the server in Nijmegen, but it is planned for the future to do remote software installation. The required language resources are copied to the server and a number of parameters are checked for compatibility with the local Internet infrastructure. The server can go now online. Training courses are given to local system experts and archivists or researchers to allow them to fully manage the system and the archive under their own control. In general it is agreed that MPI experts can carry out limited remote activities, for example, installing new software. Installation is a matter of a few



hours only, for training two to three days may be required. All included software components are Open Source and free to use.

Grid Perspective

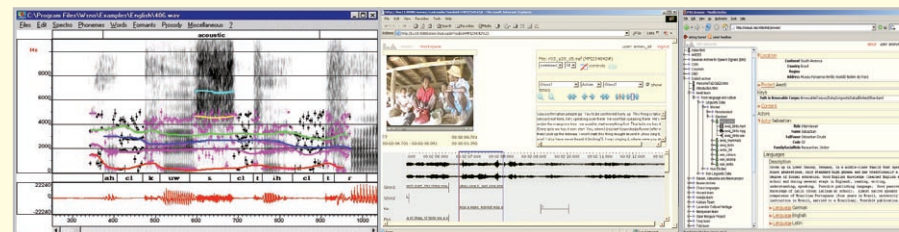
Together with the language archives at the Dutch Institute for Lexicology in Leiden, at SOAS in London and at the Linguistics Department in Lund, the MPI experts are working on Grid technologies in the EC-funded DAM-LR² project to work towards an archive federation. This work will be finished in 2007 and it is intended to extend DAM-LR to a pan-European federation and beyond. The new Regional Language Archives based on LAT technology will be a natural partner for this new type of Language Archive Federation and they already explained their interest. The DELAMAN network of Endangered Language and Music Archives world-wide will take care of the necessary global synchronization.

LAT

The LAT³ software that is installed on the regional/local servers includes the following components:

- the complete **IMDI** metadata infrastructure including a portal and, for example, gateways to allow metadata harvesting by Dublin Core or OLAC Service Providers
- the **LAMUS** software allowing local managers and authorized users to manage and upload additional resources or new versions including its web-based Access Management System
- the **ANNEX** web-software including media streaming that allows authorized users to view annotated media streams and change/add annotations
- the **LEXUS** web-software that allows authorized users to create and manipulate lexica with multimedia extensions and encyclopedic relations

Additional software components are currently in development. At present the MPI team is working on a content synchronization tool that will take care of mutual updates of archival copies. This feature will be under full control of the local archivists, i.e., only resources will be copied and synchronized within a federation where an explicit authorization is given.



¹ <http://www.mpi.nl/dobes>

² Distributed Access Management for Language Resources, www.mpi.nl/dam-lr

³ For more details we refer to the LAT web-site: www.mpi.nl/lat